

GENERAL NOTES

1. COPYRIGHT RESERVED

2. DO NOT SCALE DRAWING. USE FIGURED DIMENSIONS ONLY.

3. ALL DISCREPANCIES TO BE REPORTED TO ARCHITECT

4. THE CONTRACTOR IS RESPONSIBLE FOR CHECKING ALL LEVELS AND DIMENSIONS.

5. ALL STRUCTURE TO BE TO STRUCTURAL ENGINEERS DETAILS.

6. ALL MISC & ELEC SERVICES TO SERVICES ENGINEERS DETAILS.

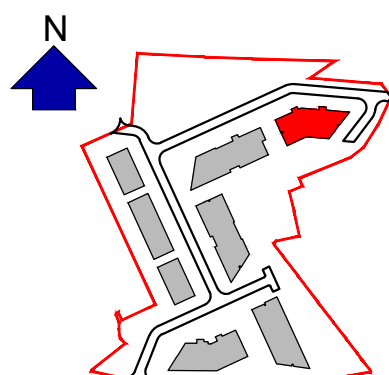
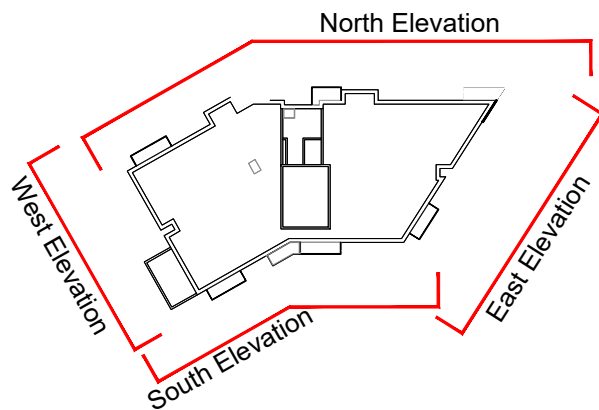
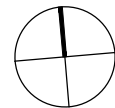
7. ALL PROPRIETARY ITEMS TO BE INSTALLED IN ACCORDANCE WITH MANUFACTURERS INSTRUCTIONS.

8. CONTRACTOR IS RESPONSIBLE FOR THE COORDINATION OF STRUCTURE FINISHES AND SERVICES.

REV	DATE	DESCRIPTION	BY

Material legend

- Selected brick finish
- Selected render finish
- Spandrel cladding to selected colour
- Selected metal cladding
- Steel balconies with steel guarding
- Double glazed windows/ doors/ screens to selected colour
- Selected light weight aluminium glazing system with spandrel panels
- Louvered privacy screen
- Aluminium capping to parapets
- Pressed aluminium sills to selected powder coated RAL colour



Keyplan



JOHN FLEMING ARCHITECTS

The Tree House
17 Richview Office Park, DUBLIN 14.
T: (01) 6689888 E: info@jfa.ie W: www.jfa.ie

CLIENT
Ardstone Homes Ltd.

PROJECT
White Pines East SHD
Stocking Ave

DRAWING
Apartment Block E
Elevations

SCALE
1:200@A1

JOB NO.
1941

DRAWN BY
OC

DATE
March 2021

DRAWING NUMBER
WPE-JFA-EL-AE-DR-A-P4005

REVISION

DRAWING LOCATION
\\19-jobs\1941\03-planning\31_planning
apartment\31.2\ae-el-ae\ae-el-ae

DRAWING STATUS
Planning



Block E_ South Elevation
1:200 @ A1



Block E_ East Elevation
1:200 @ A1



Block E_ North Elevation
1:200 @ A1



Block E_ West Elevation
1:200 @ A1